

NiN mapping in northern Norway

Field study of mapping efficiency and precision in Karasjok area

Michal Torma – Geco group (NHM-UiO)

in colaboration with: Anders Bryn, Rune Halvorsen, Peter Horvath

Outline

WHO (WAS PART OF THE FIELD STUDY)

WHEN (DID IT HAPPEN)

WHAT (IS NIN MAPPING)

WHERE (DID WE DO THE MAPPING)

WHY (DID WE DO IT)

HOW (DID WE DO IT)

WHAT (RESULTS TO EXPECT)



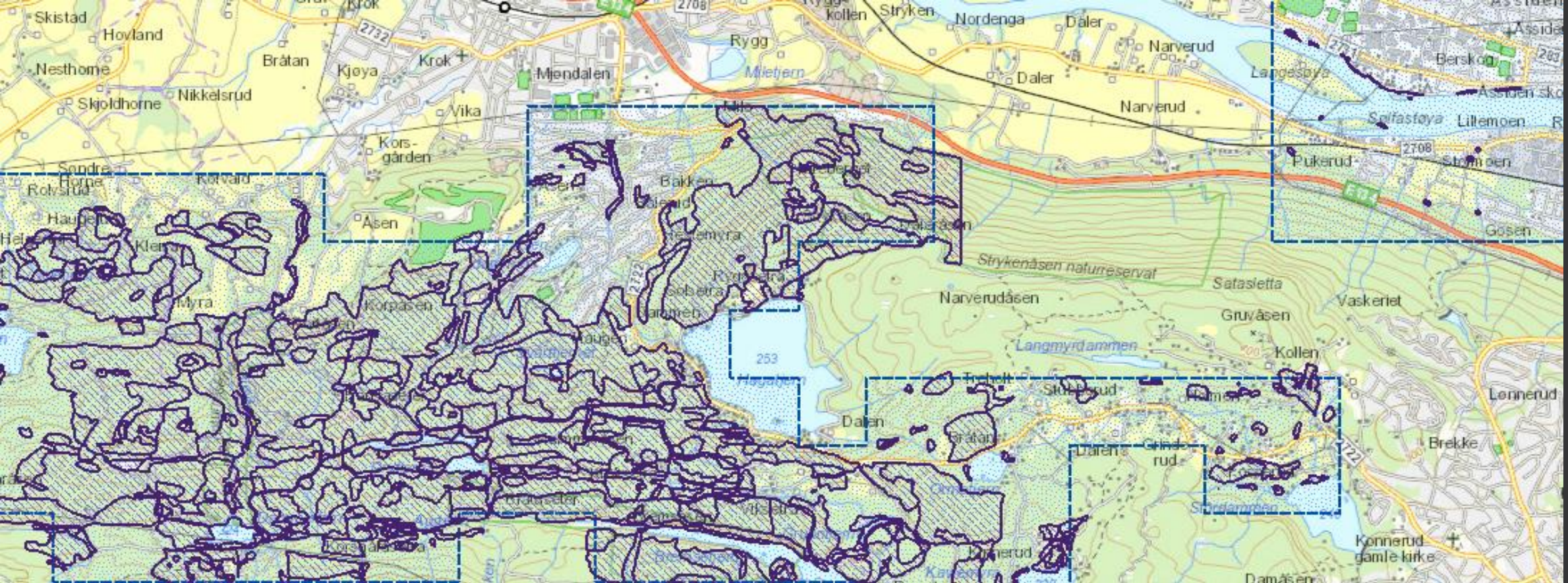
Who

- 12 participants in the study
- GEco group (NHM-UiO)
- Dokkadeltaet kartlegging
- Sallir Natur
- Geologisk Institutt UiO
- UiB

When

- 3-8.8.2020
- 1 day of calibration
- 4 days of actual mapping





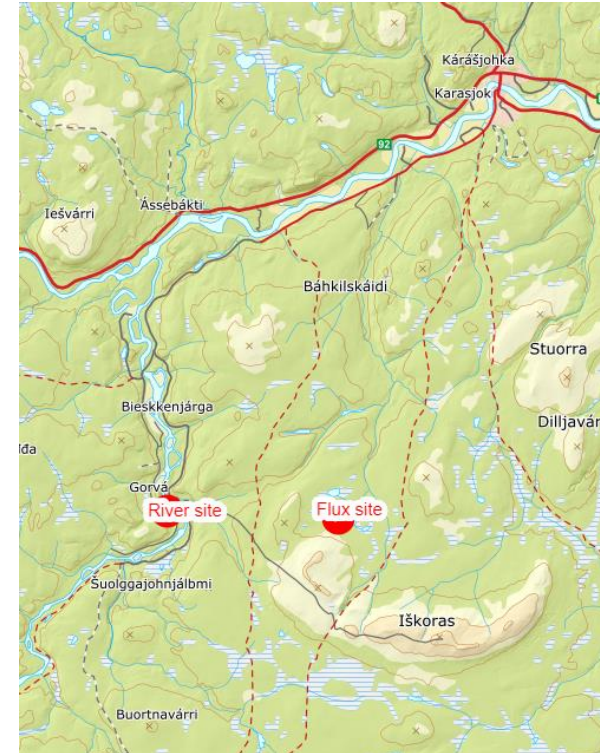
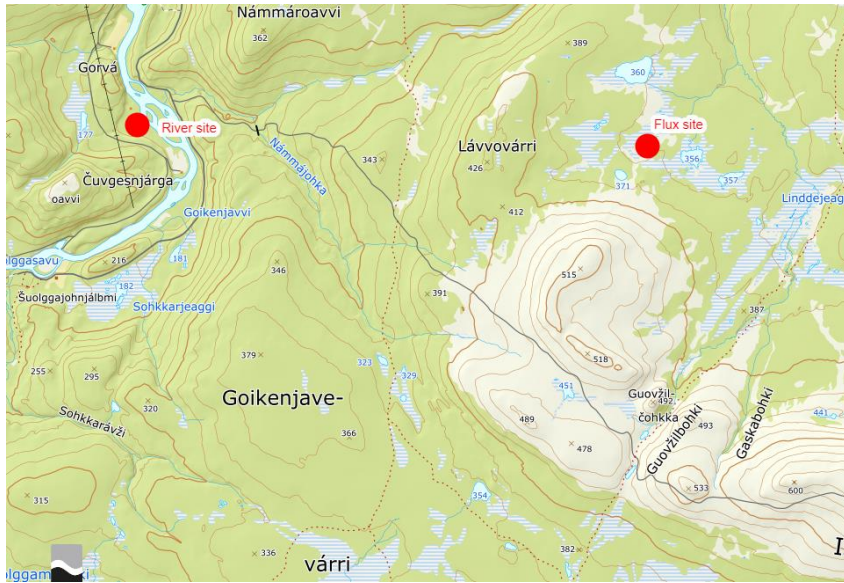
What (is NiN mapping)

- *[Natur I Norge]* is a common tool for describing nature in a comparable way. NiN meets the needs of different sectors for a common conceptual framework and handles nature variation on all scales. The system handles everything from the large formations that form a landscape, down to the root that houses the body of an insect. (artsdatabanken.no)



Where

Karasjok (*Finnmark, Norway*)



Two study sites

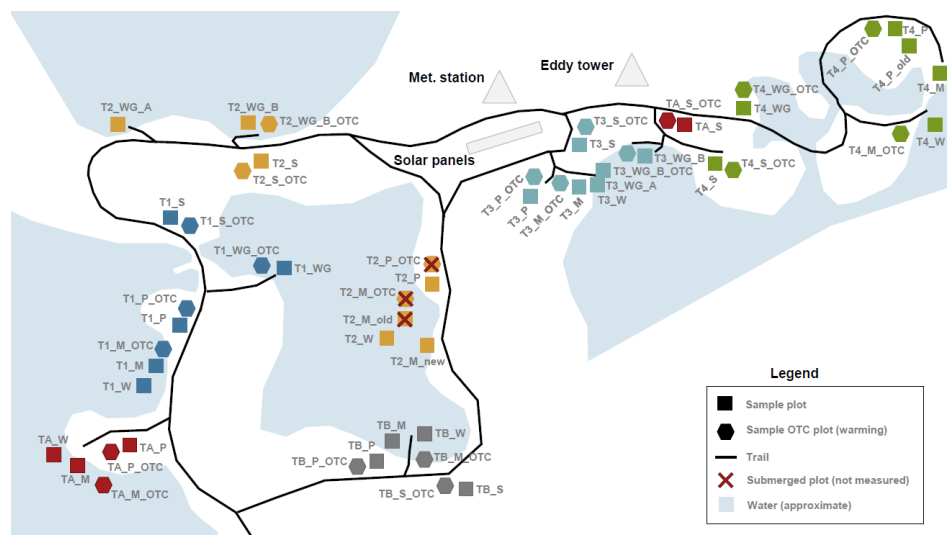
- River site = 1 km²
- Flux site = 0.5 km²

River site



Flux site







Why

- Generate study material for a peer-review publication
- Test aspects of generalization: 1:5 000 vs 1:20 000
 - Effects of mapping scale: Spatial and ecological information effects
 - Consistency of mapping across scales
 - Effects of starting scale
- Effects of experience
- Effects of ecosystem
- Progress of field-based mapping (time-use)
- Provide support for LATICE / EMERALD

How

- 12 mappers divided into 3 experience groups
- 12 mappers in total 4 classes:
 1. 3 mappers 1:5000 in River site 5-7th August – 1:20000 in Flux site 8th August
 2. 3 mappers 1:5000 in Flux site 5-7th August – 1:20000 in River site 8th August
 3. 3 mappers 1:20000 in River site 5th August – 1:5000 in Flux site 6-8th August
 4. 3 mappers 1:20000 in Flux site 5th August – 1:5000 in River site 6-8th August

What results to expect

- Peer-reviewed publication about mapping practices.
- Improvements for NiN system.
- Detailed consensus map of Iškoras flux tower surroundings.



Thank you for attention