



KJM 5300

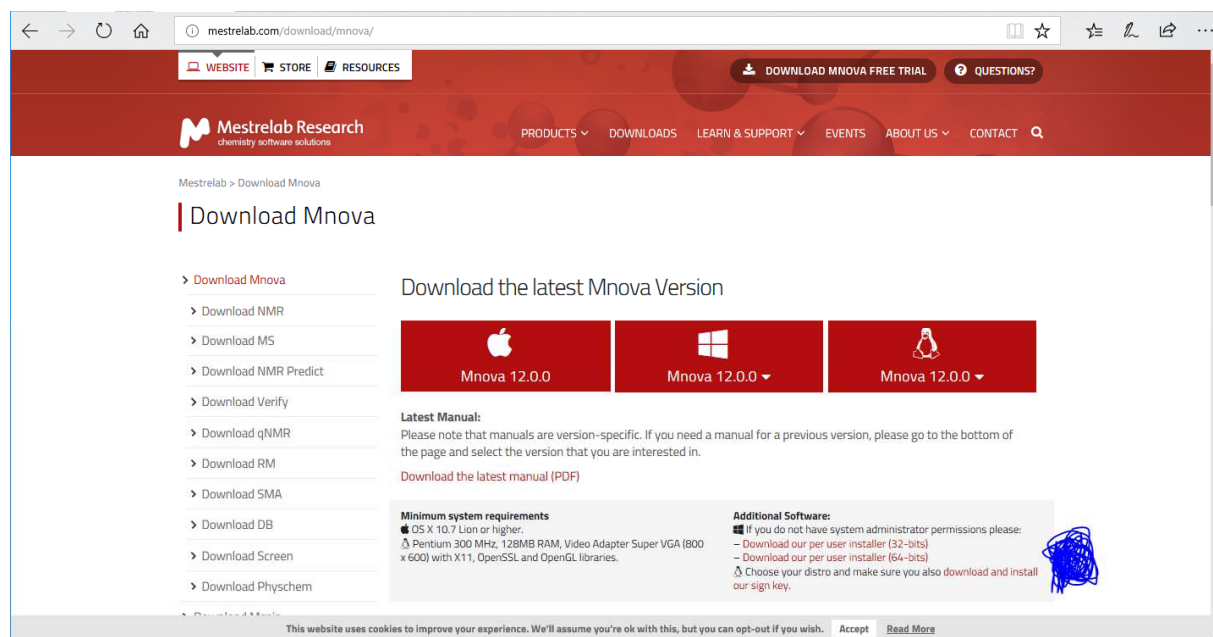
MestreNova

Program installation and  
Introductory use

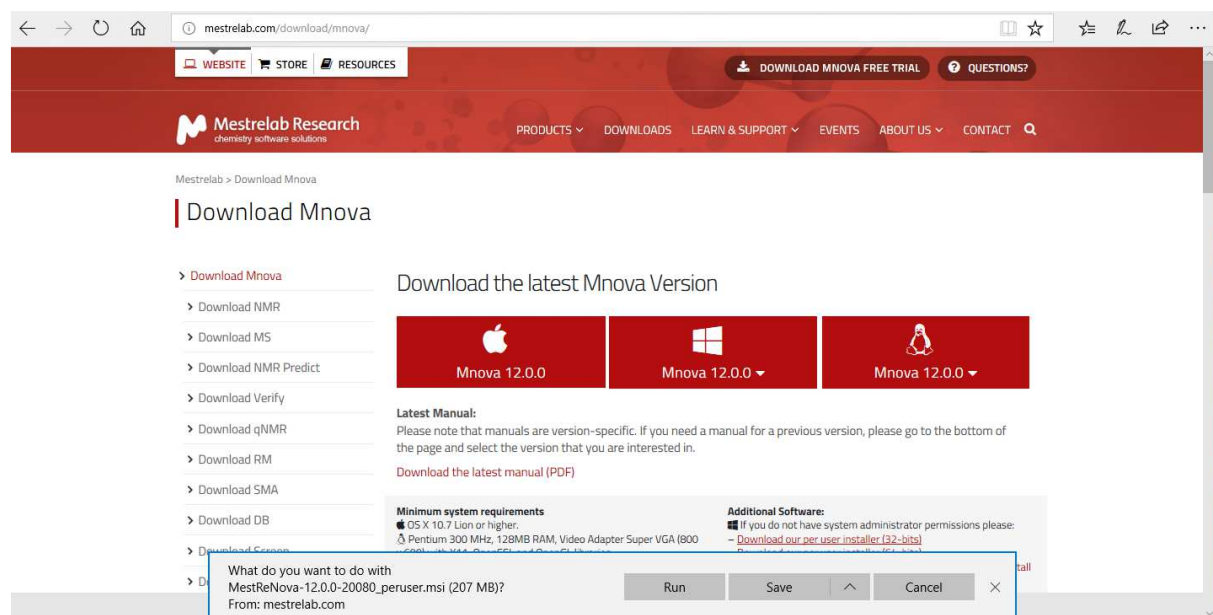
Version 1.0

© F. Rise December 2017

Please locate [mestrelab.com/download/mnova/](https://mestrelab.com/download/mnova/)



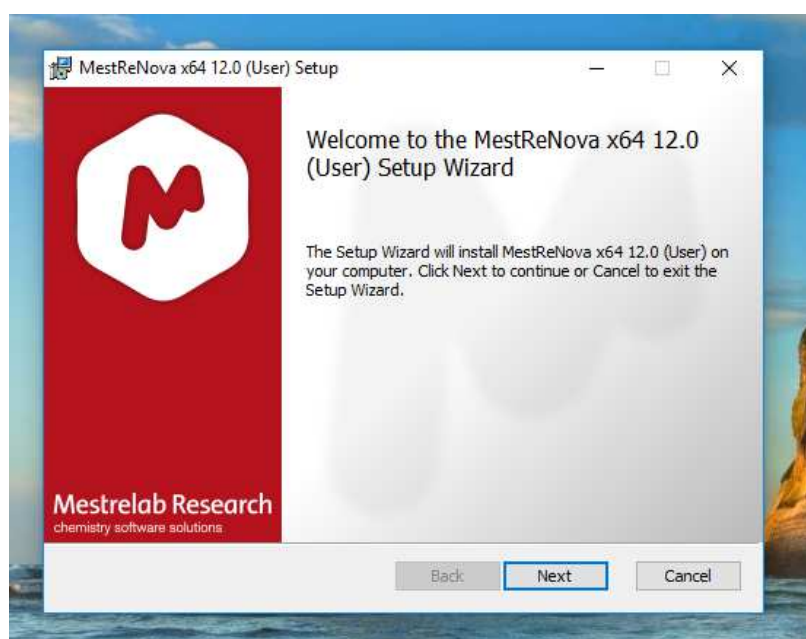
You are using Macintosh? Windows? Alternatively, Linux? When using Windows please look to the left of the blue clutter in the picture above. Download your version. In the following, the “Download per user installer (64-bits)” was used.



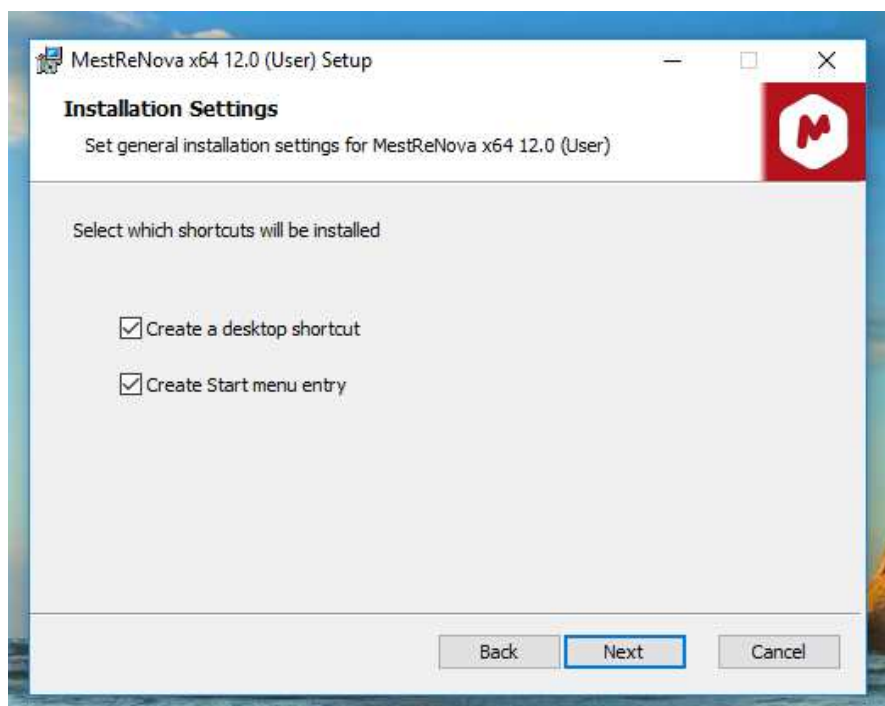
Save to desktop so you find what you downloaded.



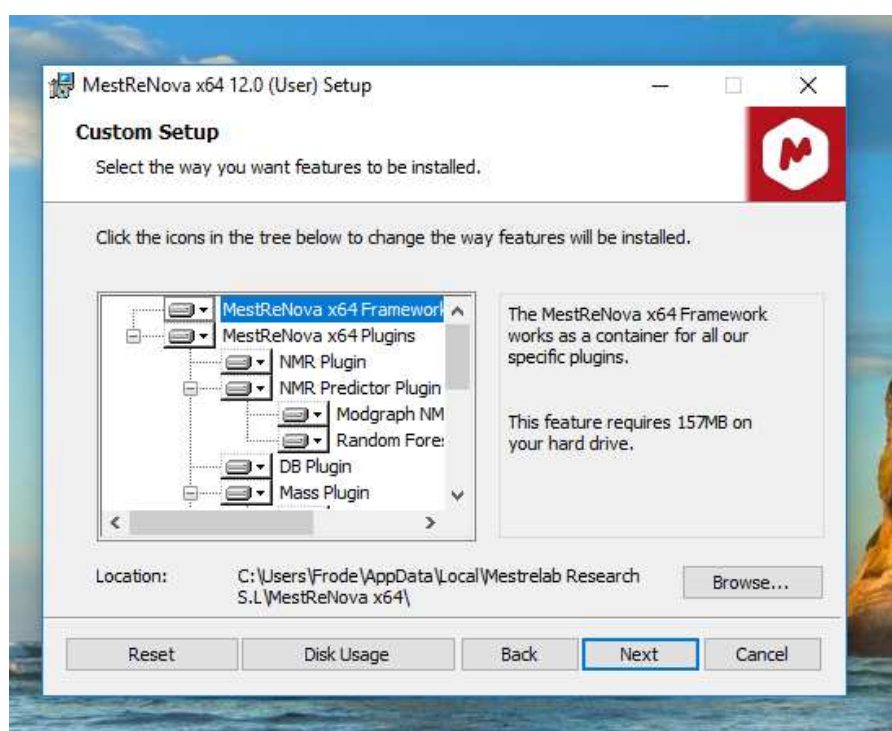
Click on it.



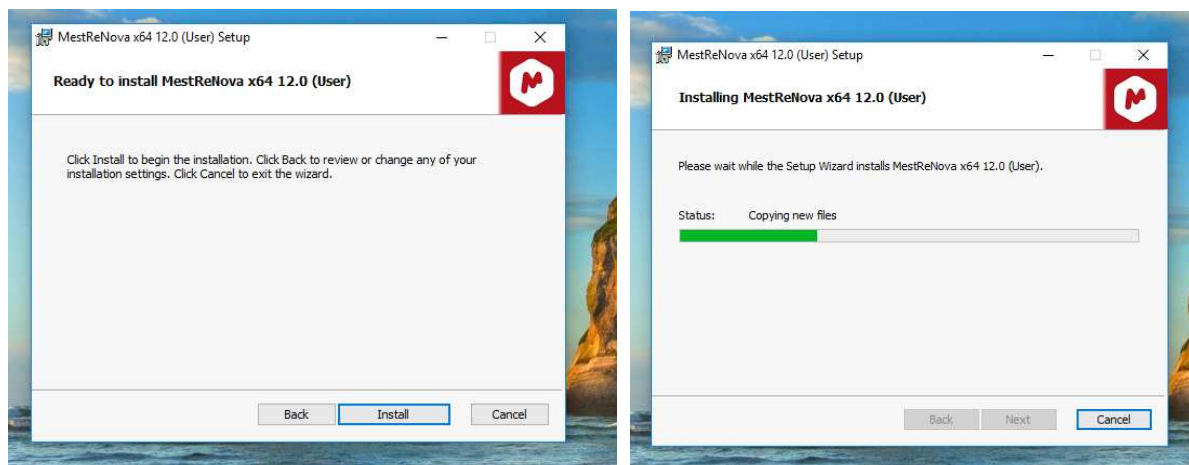
Well? Next.



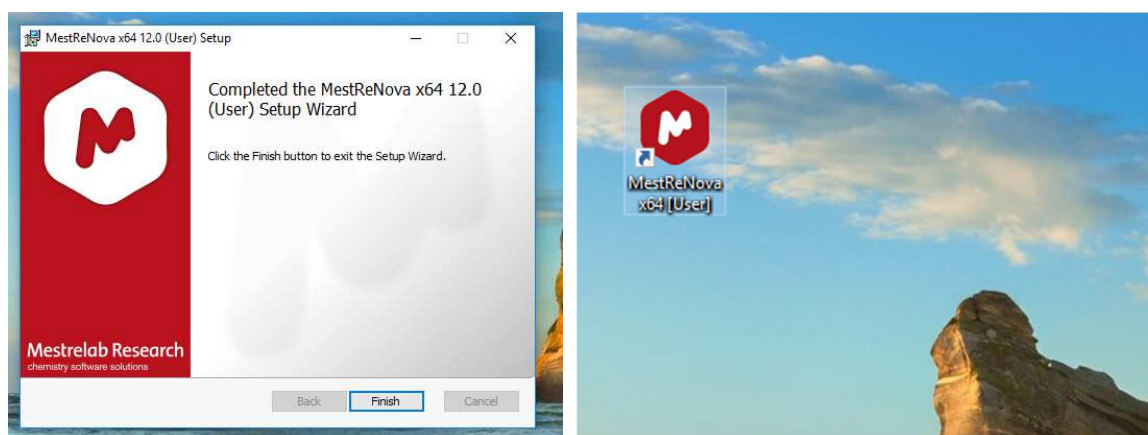
Next again.



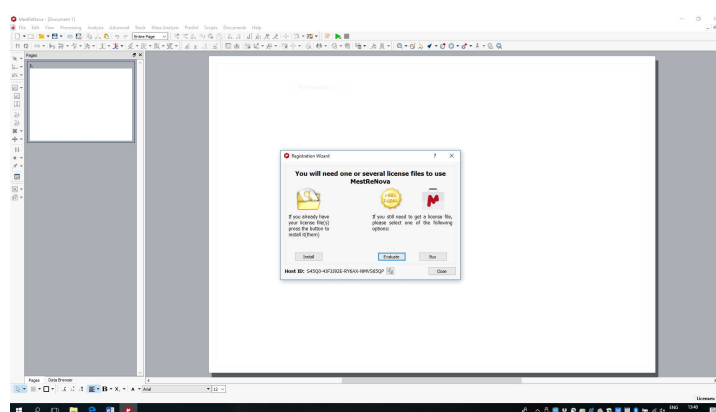
Whatever. No one understand this. Next.



So many steps. Go on.



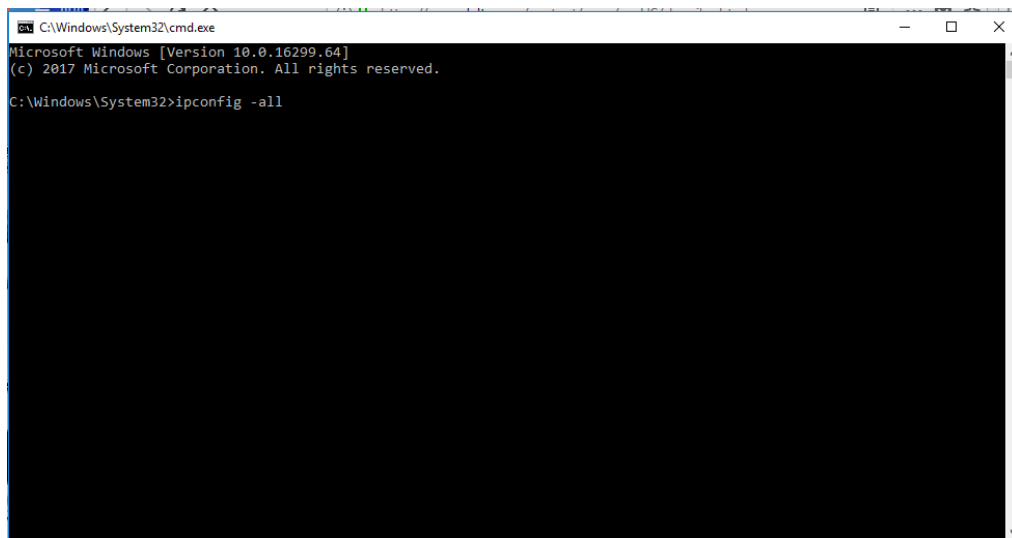
Finally, the program symbol/icon is on desktop. Click on it.



Oh – do I need a license? As a UiO user at either the Department of Chemistry or School of Pharmacy, you will obtain one, or rather three of them from either [itsupport@kjemi.uio.no](mailto:itsupport@kjemi.uio.no) or

from [froderi@kjemi.uio.no](mailto:froderi@kjemi.uio.no) when you send the physical address/MAC address of your PC/Mac to one of these e-mail addresses. Yes, your PC does have a MAC address.

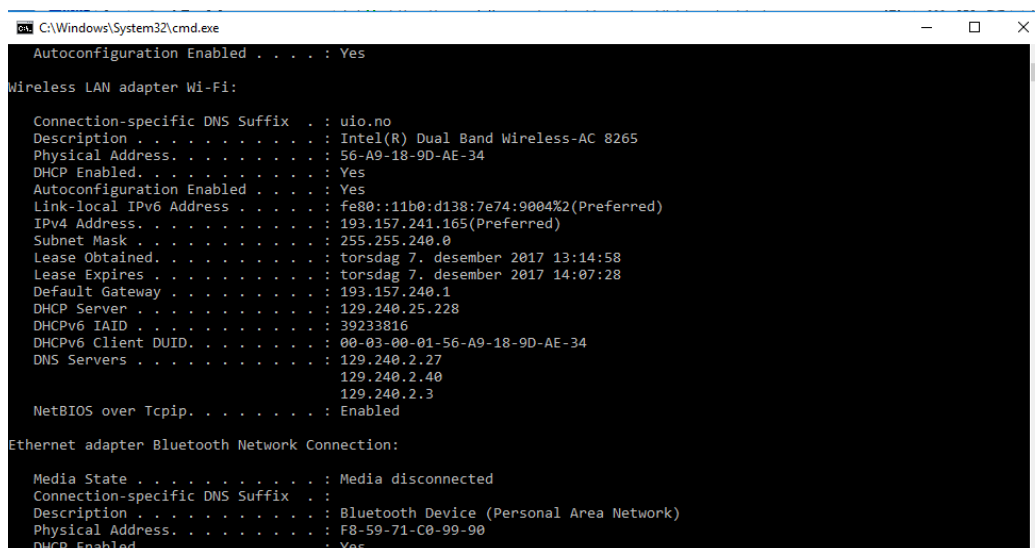
Go to Start in lower left corner of your Windows 7 PC. Type cmd in the command line.



```
C:\Windows\System32\cmd.exe
Microsoft Windows [Version 10.0.16299.64]
(c) 2017 Microsoft Corporation. All rights reserved.

C:\Windows\System32>ipconfig -all
```

In you type ipconfig –all



```
C:\Windows\System32\cmd.exe
Autoconfiguration Enabled . . . . . : Yes

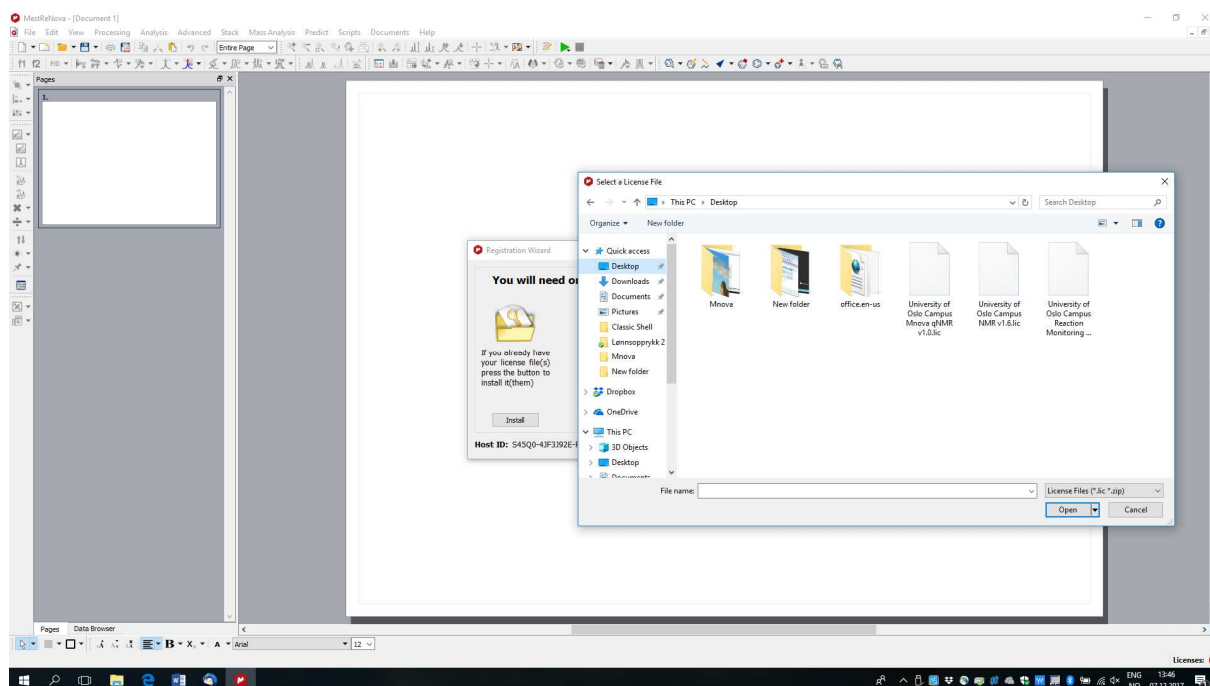
Wireless LAN adapter Wi-Fi:

Connection-specific DNS Suffix  . : uio.no
Description . . . . . : Intel(R) Dual Band Wireless-AC 8265
Physical Address. . . . . : 56-A9-18-9D-AE-34
DHCP Enabled. . . . . : Yes
Autoconfiguration Enabled . . . . . : Yes
Link-local IPv6 Address . . . . . : fe80::11b0:d138:7e74:9004%2(Preferred)
IPv4 Address. . . . . : 193.157.241.165(Preferred)
Subnet Mask . . . . . : 255.255.240.0
Lease Obtained. . . . . : torsdag 7. desember 2017 13:14:58
Lease Expires . . . . . : torsdag 7. desember 2017 14:07:28
Default Gateway . . . . . : 193.157.240.1
DHCP Server . . . . . : 129.240.25.228
DHCPv6 IAID . . . . . : 39233816
DHCPv6 Client DUID. . . . . : 00-03-00-01-56-A9-18-9D-AE-34
DNS Servers . . . . . : 129.240.2.27
                        129.240.2.40
                        129.240.2.3
NetBIOS over Tcpip. . . . . : Enabled

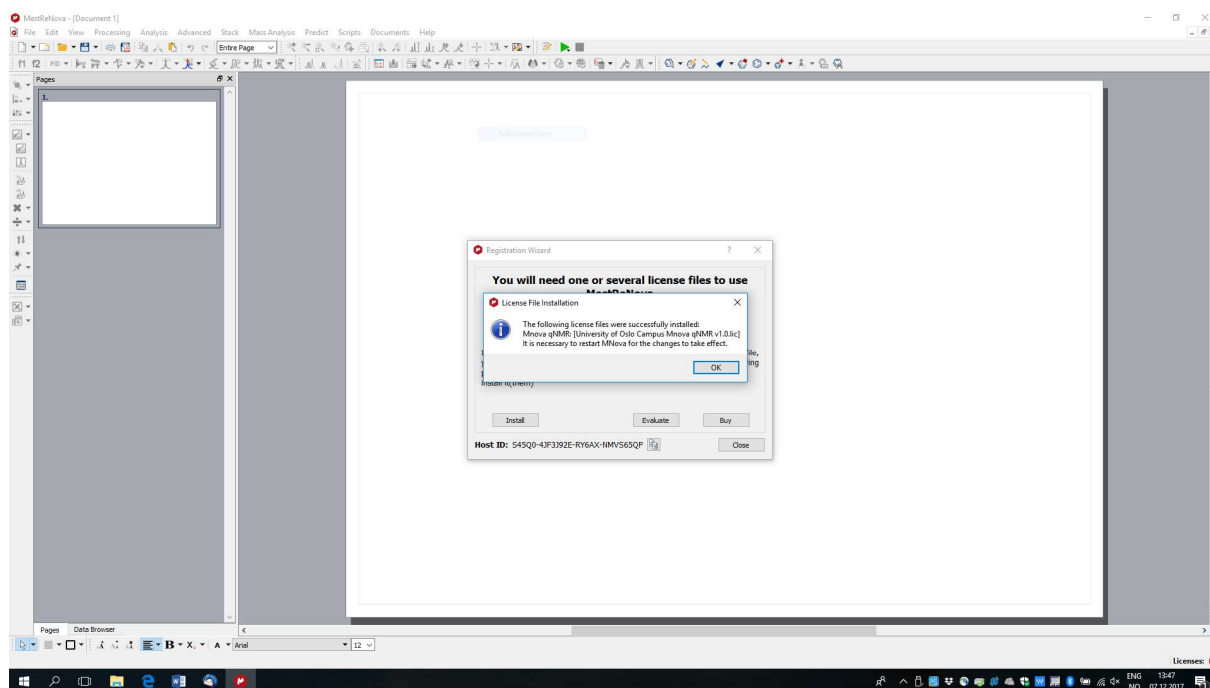
Ethernet adapter Bluetooth Network Connection:

Media State . . . . . : Media disconnected
Connection-specific DNS Suffix  . :
Description . . . . . : Bluetooth Device (Personal Area Network)
Physical Address. . . . . : F8-59-71-C0-99-90
DHCP Enabled. . . . . : Yes
```

The physical address/MAC address in this instance is 56-A9-18-9D-AE-34 and not the IPv4 number.

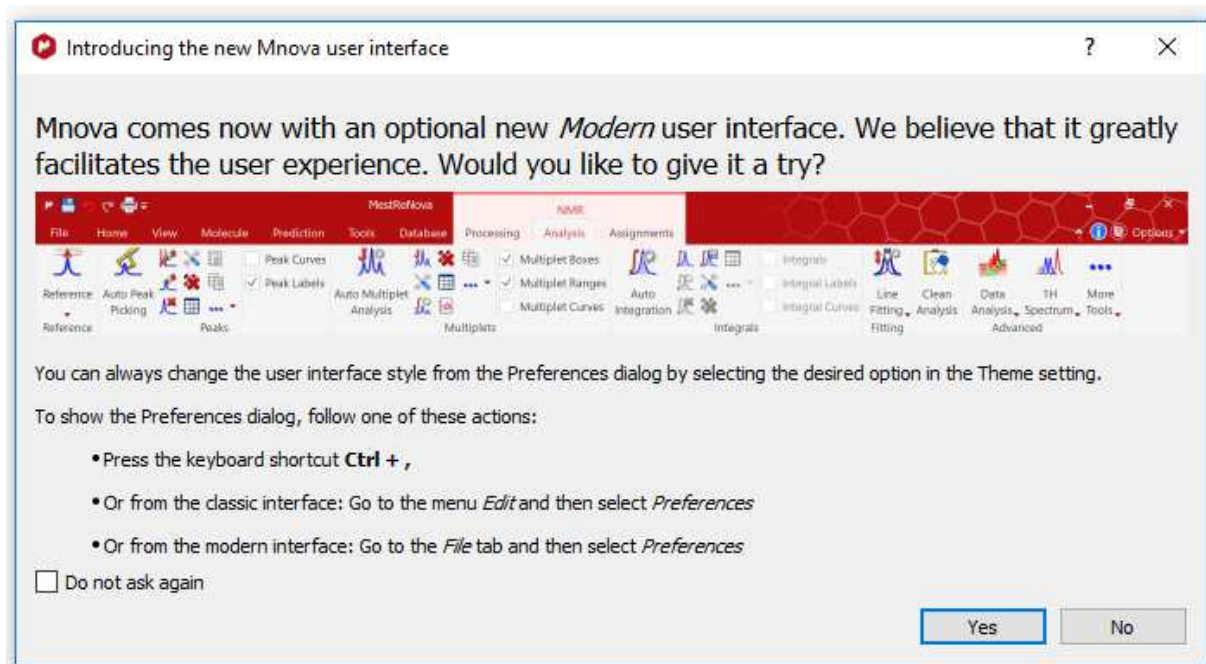


Locate your licenses. Click on install and be a little intelligent.

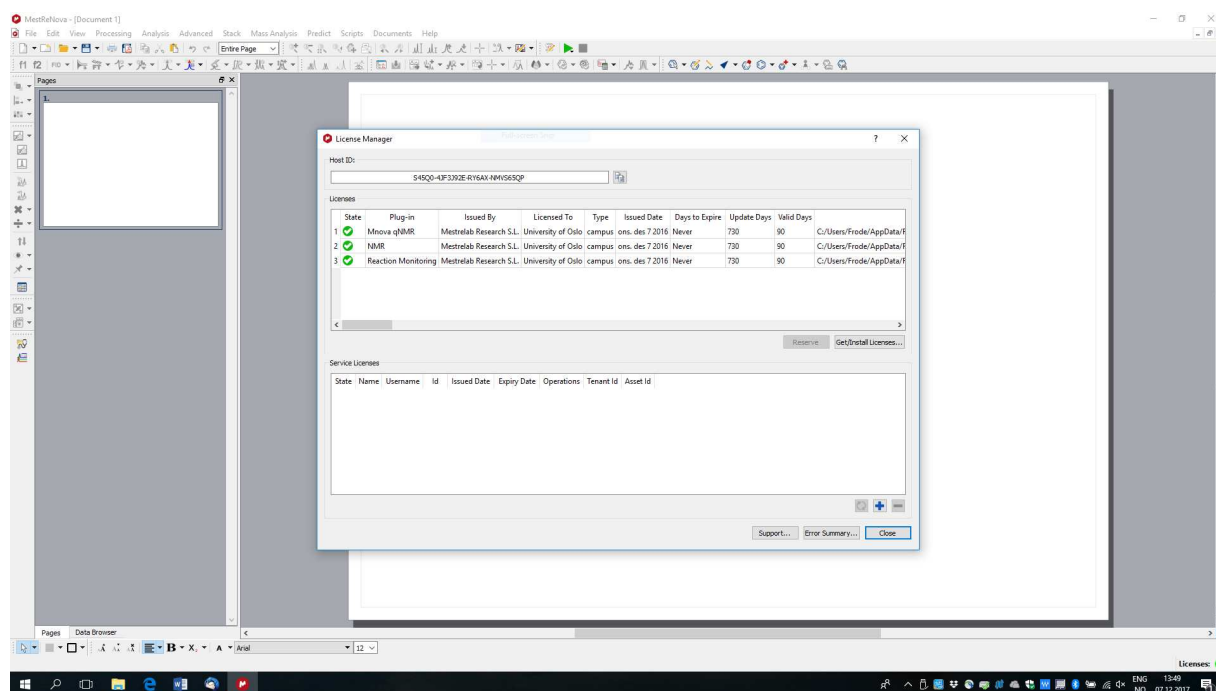


Install all three of them, one by one.





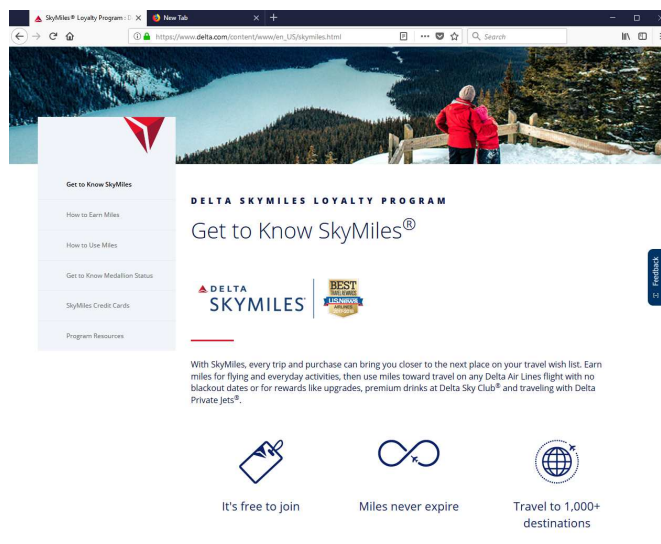
I really do not know what to suggest here. For the time being, the old user interface is used in this document. Restart MestReNova.



Help and License manager brings up this window. Note “Days to Expire” = Never. This is just as good as when you are collecting frequent flyer miles with Delta. SAS Euro bonus and KLM’s

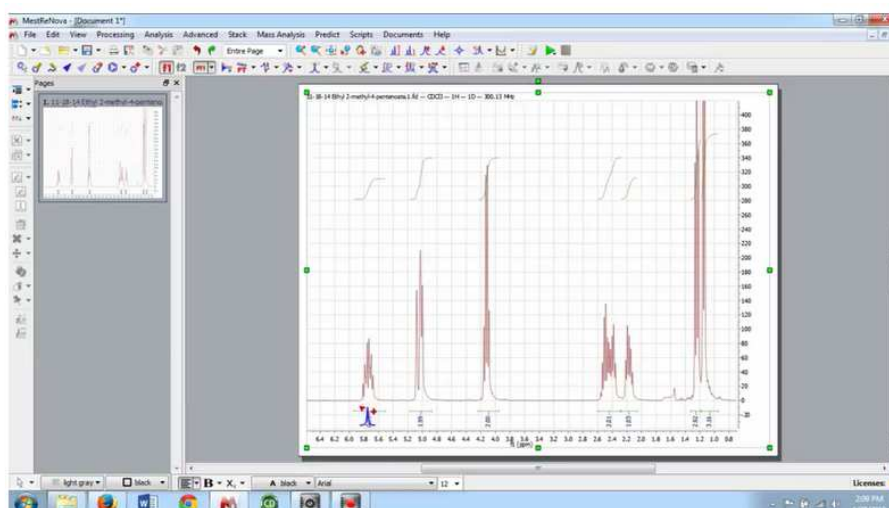


program always let the miles expire for the author before they can be used for anything. Fly Delta ☺ and order your tickets for KLM destinations at <https://www.delta.com/> as well.

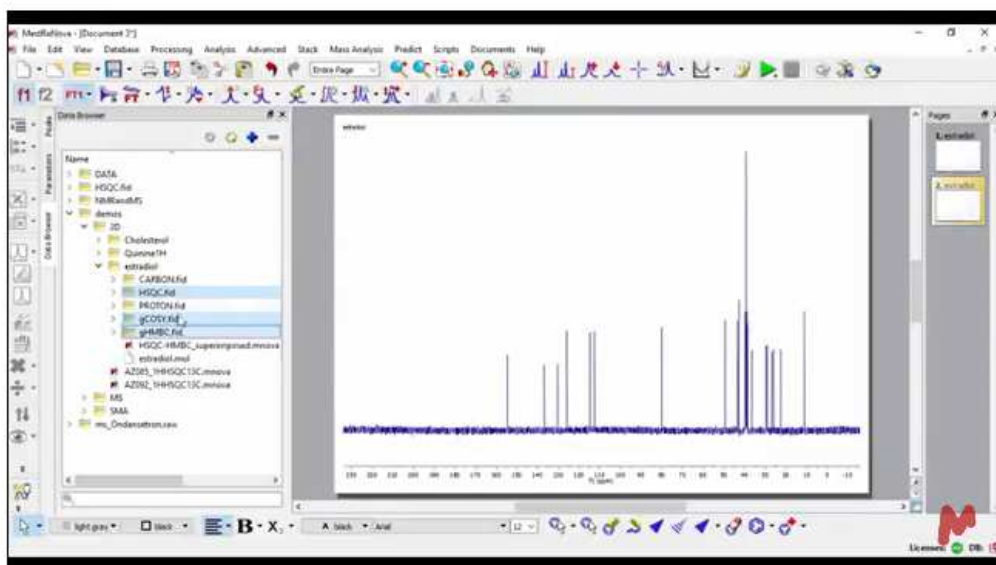


You can update MestreNova until 2019-12-07. The program license will never expire. When 150 users have installed MestreNova, the next user installing the program will not be able to use the program before one of 150 have forgotten to use her license for 90 days.

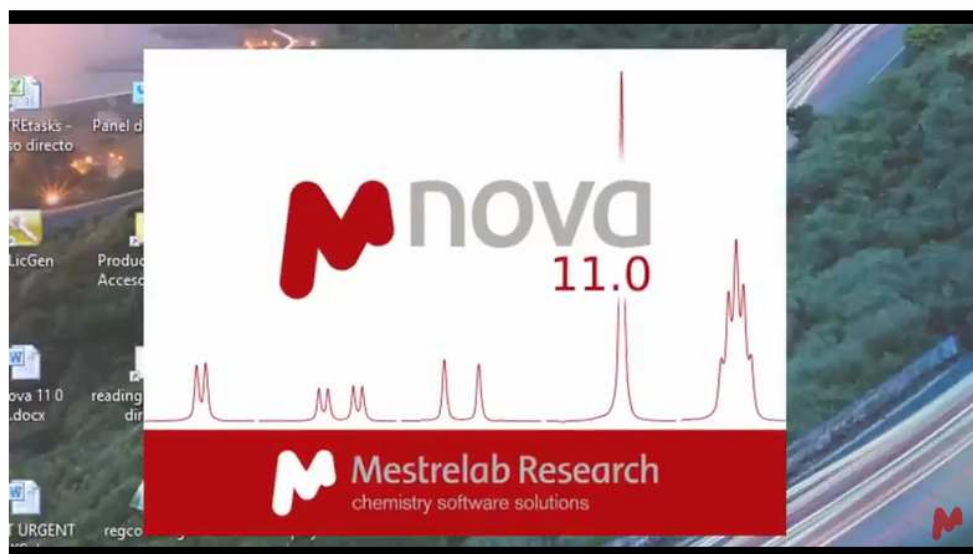
Before trying to explain intricacies of the program, the reader is advised to watch a bunch of YouTube videos showing how to use the program. Simply search for MestreNova and video. At the time, this document was written the following videos were instructive. Stop the videos often so you can repeat all the steps with your own nmr-data.



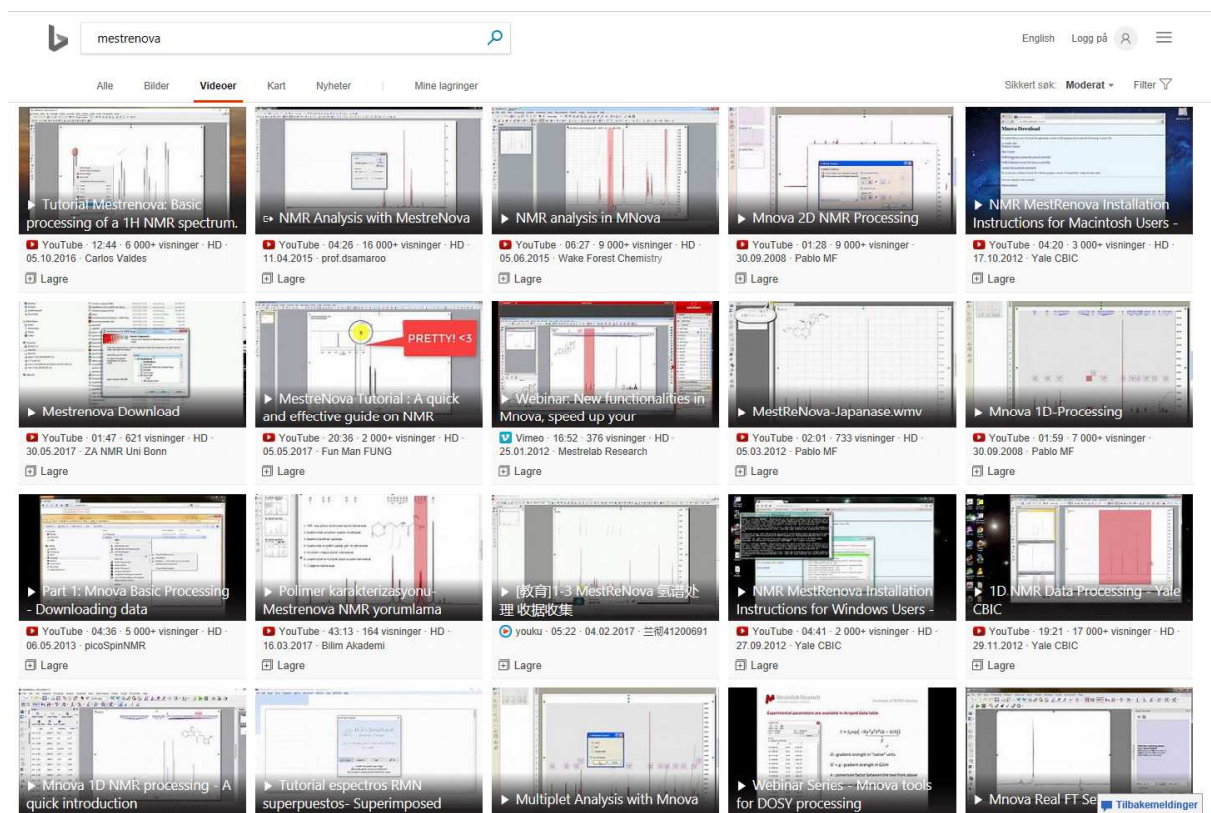
<https://www.youtube.com/watch?v=DX02Nubdm44>



<http://resources.mestrelab.com/mnova-2d-nmr-processing-a-quick-introduction/>



<https://www.youtube.com/watch?v=NqELnbaNI7s>



Searching the Internet brings up many Mestrenova videos.