



KJM 5280, KJM 5250 and KJM 9250

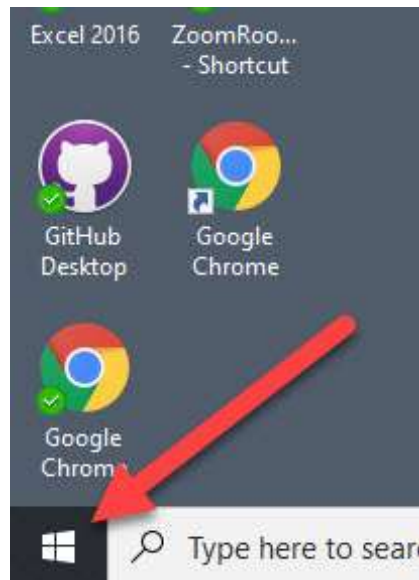
NMR processing everywhere
with VMware Horizon Client
and TopSpin 3.6.2

Version 1.0

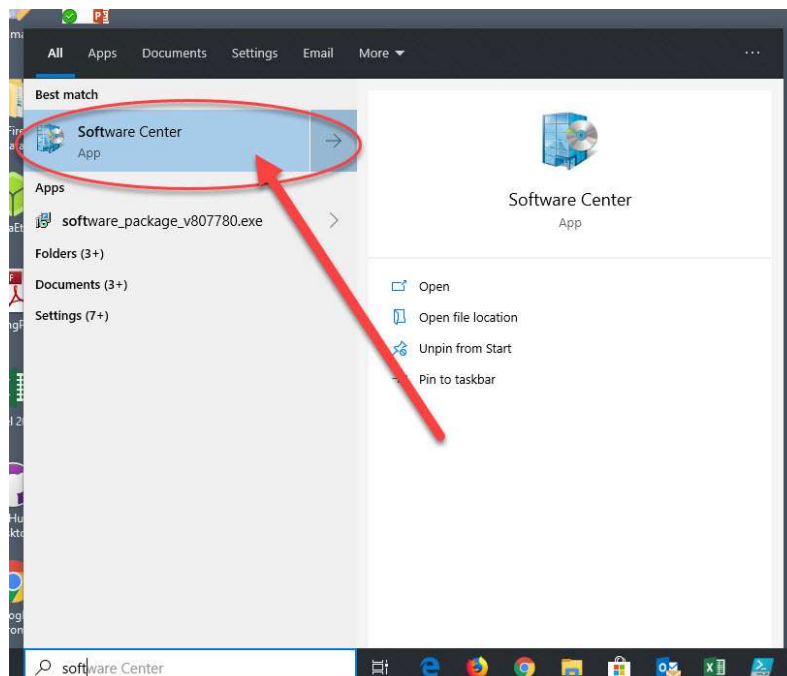
© Morten Berntsen and Frode Rise, December 2019

You must install VMware on your Pc or Macintosh. If you use a UiO-managed PC do as follows:

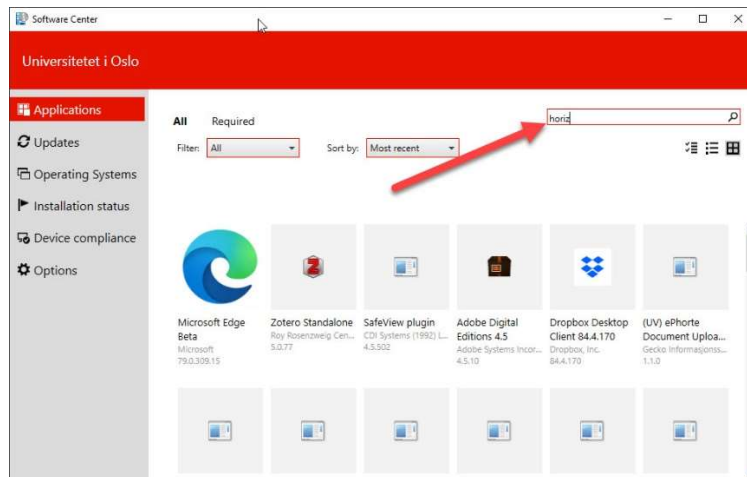
Start by clicking on the Windows-symbol in the bottom left corner or by hitting the windows-key on your keyboard.



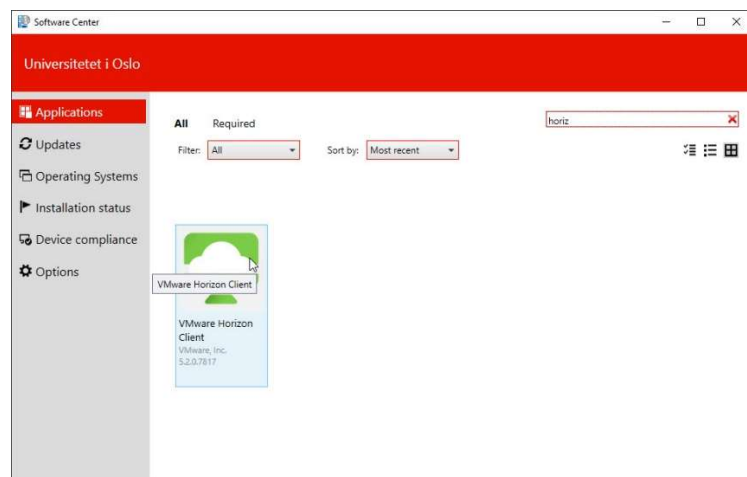
Then immediately start typing Softwa... in the writable window (not shown here). The application Software Center shows up as a suggestion. Click on it.



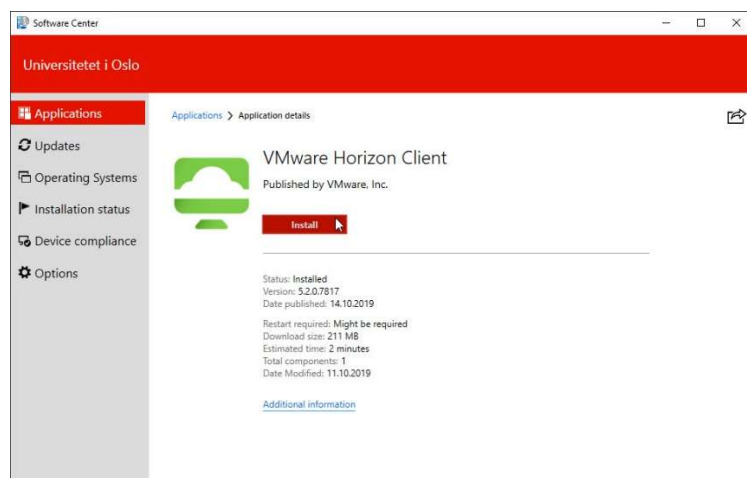
In the search field type in horiz as shown, then hit the Enter-key.



VMware Horizon Client shows up. Click on it.



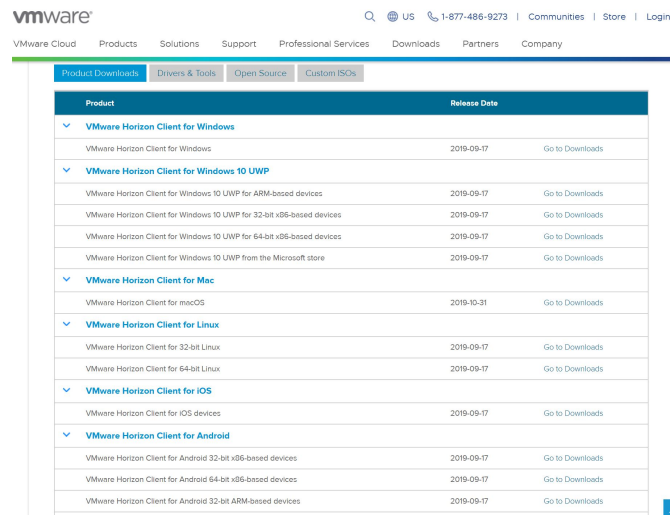
Click on Install



Installing VMware Horizon Client on a non UiO computer (including UiO and private Macintoshes):

Go to:

https://my.vmware.com/en/web/vmware/info/slug/desktop_end_user_computing/vmware_horizon_clients/5_0



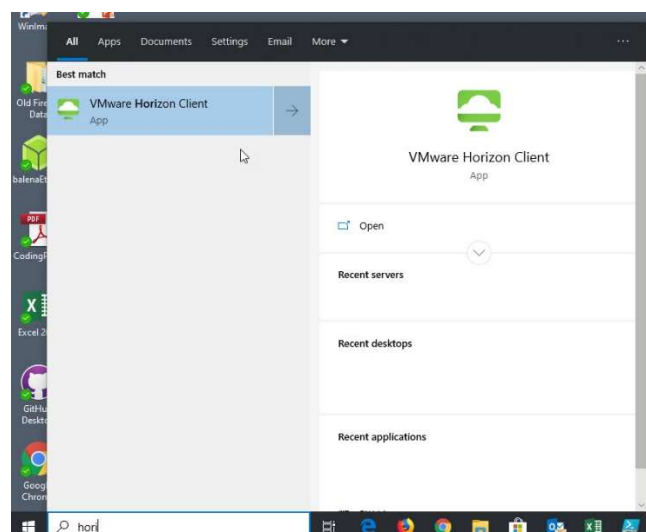
Product	Release Date	
VMware Horizon Client for Windows		
VMware Horizon Client for Windows	2019-09-17	Go to Downloads
VMware Horizon Client for Windows 10 UWP		
VMware Horizon Client for Windows 10 UWP for ARM-based devices	2019-09-17	Go to Downloads
VMware Horizon Client for Windows 10 UWP for 32-bit x86-based devices	2019-09-17	Go to Downloads
VMware Horizon Client for Windows 10 UWP for 64-bit x86-based devices	2019-09-17	Go to Downloads
VMware Horizon Client for Windows 10 UWP from the Microsoft store	2019-09-17	Go to Downloads
VMware Horizon Client for Mac		
VMware Horizon Client for macOS	2019-10-31	Go to Downloads
VMware Horizon Client for Linux		
VMware Horizon Client for 32-bit Linux	2019-09-17	Go to Downloads
VMware Horizon Client for 64-bit Linux	2019-09-17	Go to Downloads
VMware Horizon Client for iOS		
VMware Horizon Client for iOS devices	2019-09-17	Go to Downloads
VMware Horizon Client for Android		
VMware Horizon Client for Android 32-bit x86-based devices	2019-09-17	Go to Downloads
VMware Horizon Client for Android 64-bit x86-based devices	2019-09-17	Go to Downloads
VMware Horizon Client for Android 32-bit ARM-based devices	2019-09-17	Go to Downloads

Download and install the upper selection for Windows or the Mac version, the Linux version, the iOS (iPhone and iPad) or the correct Android version.

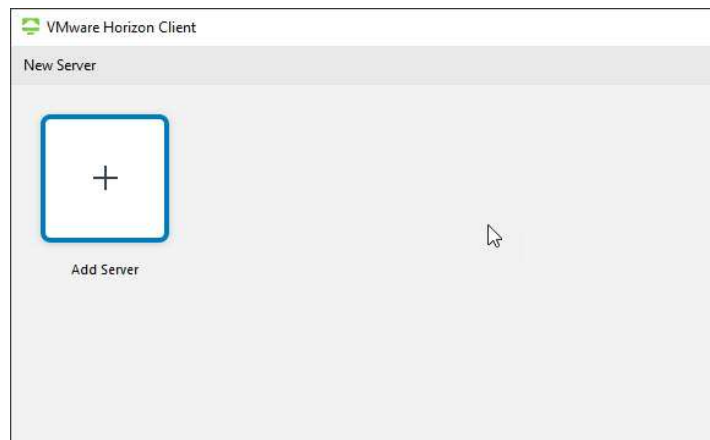
Starting the VMware Horizon Client:

Start by clicking on Windows-symbol in the bottom left corner or by hitting the windows-key on your keyboard on your PC and then immediately start typing "hori"

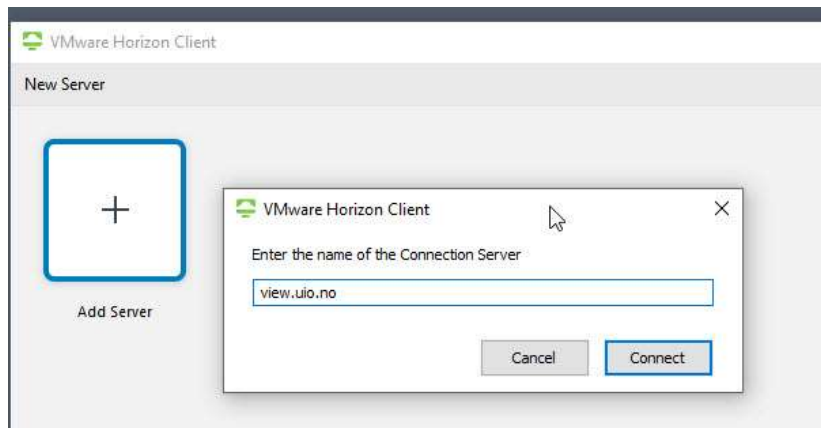
Alternatively click on the green VMware symbol located somewhere on your desktop. Click on «VMware Horizon Client», and the application starts up.



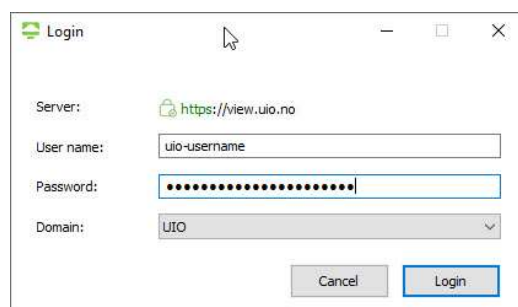
When this is the first time you are using the program, it needs to be configured so it will know where to find it's stuff. Start by double-clicking on "Add Server".



Fill in «view.uio.no». Do not type « and » use only view.uio.no



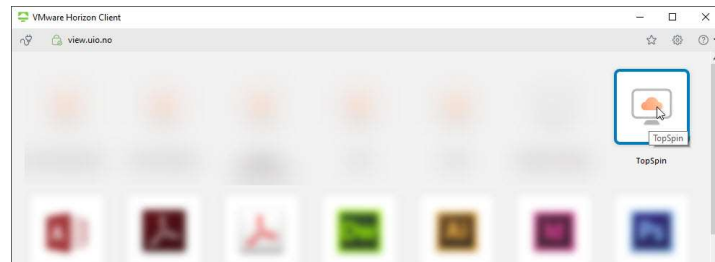
Type in your uio-username and password. Click "Login" Do not type uio- in front of your username.



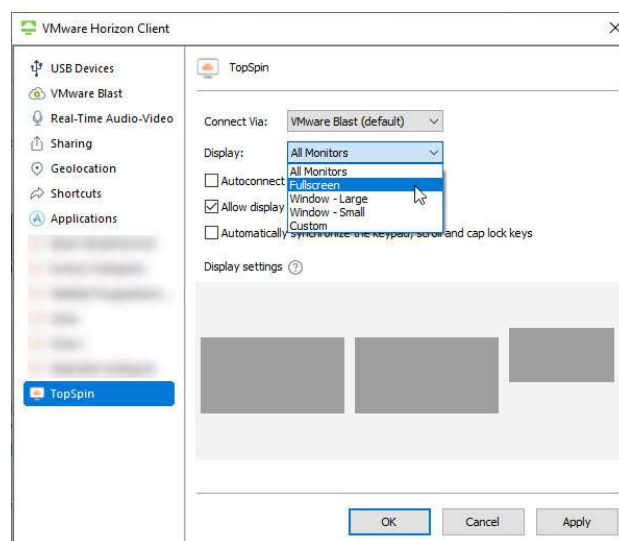
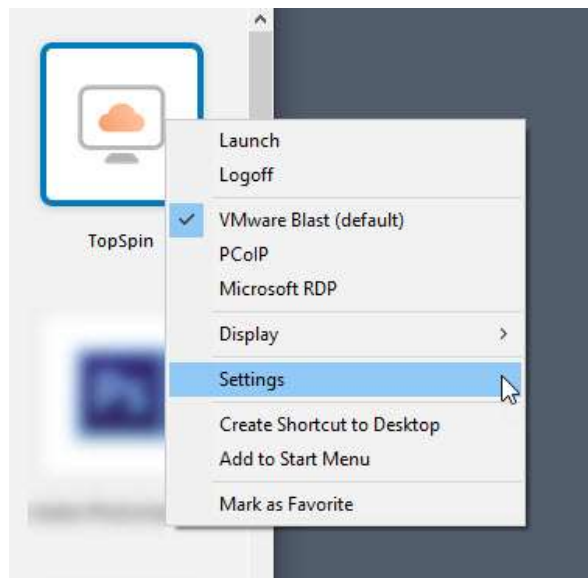
Click Yes or No. Frode says Yes and Morten says No.



Then the following window pops up. Click on TopSpin in order to start the remote-session for TopSpin.



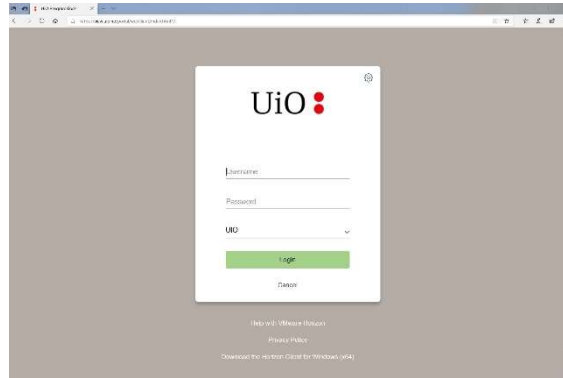
If you are using multiple monitors this connection will by default grab all monitors (at least Morten's does). If this is an unwanted behavior, you can do the following. Right-click the symbol for the TopSpin server and select settings.



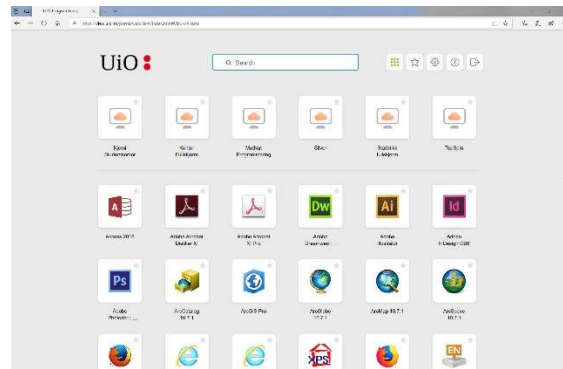
Select Fullscreen (or another one, other than "All Monitors") in the Display field. Click OK to save and exit.

As an option to installing VMware you can use VMware in a web browser. Then VMware is not operating as a standalone program. Start a web – browser of your choice:

Type <https://view.uio.no>

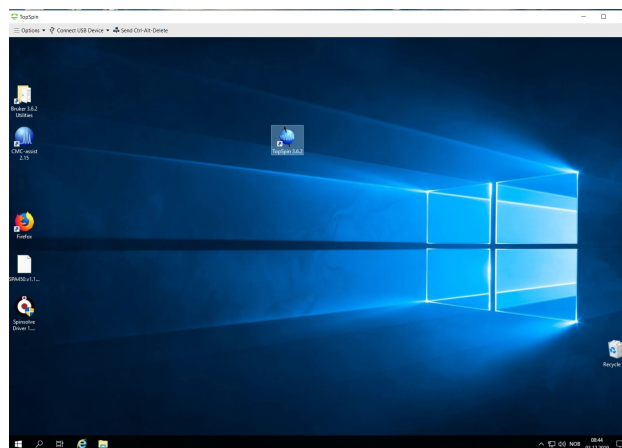


Login with your UiO username and password. After a while you get the following:

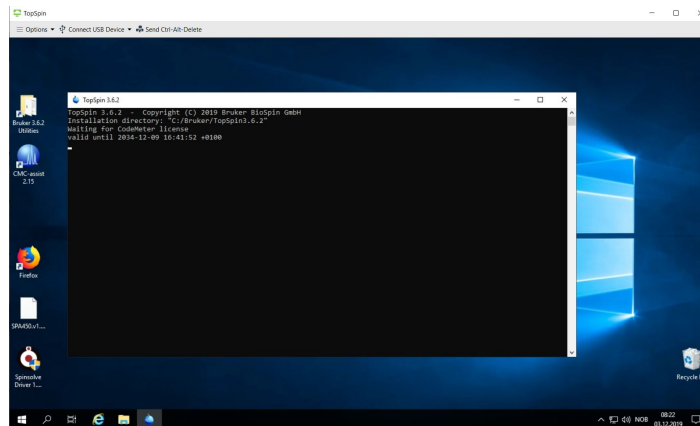


Either a new desktop on top of your regular desktop or a window on your desktop. Double click on the TopSpin icon and sit back and wait.....

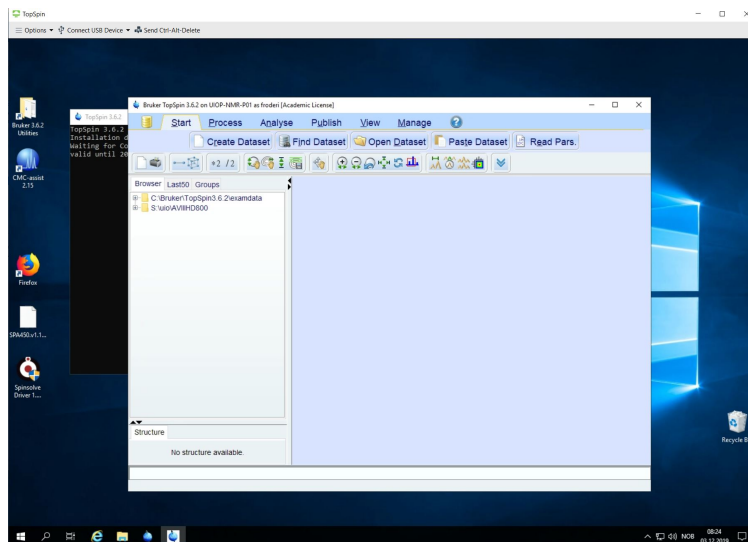
Here is a picture showing what it looks like after starting the VMware program (not in a browser) It might be troublesome to get back to your own desktop. How to do this is explained later. Double click on the TopSpin 3.6.2 icon and wait a little less compared to above.



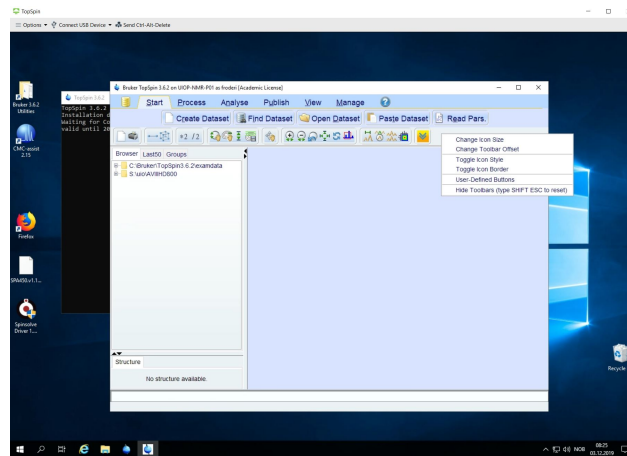
Wait a minute or three for the program to start.



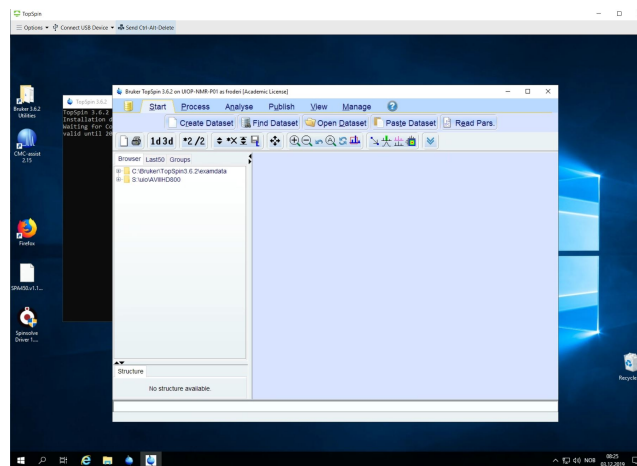
When the program starts you will see too few icons in the top lines of the program and they are in a new format. Your task is to add a second line of icons and make them look like old style buttons



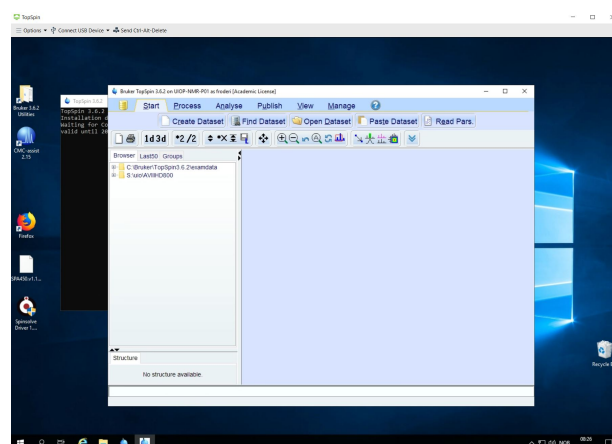
Click with right mouse button to the right of the double arrow pointing downwards and select toggle icon style with the left mouse button.



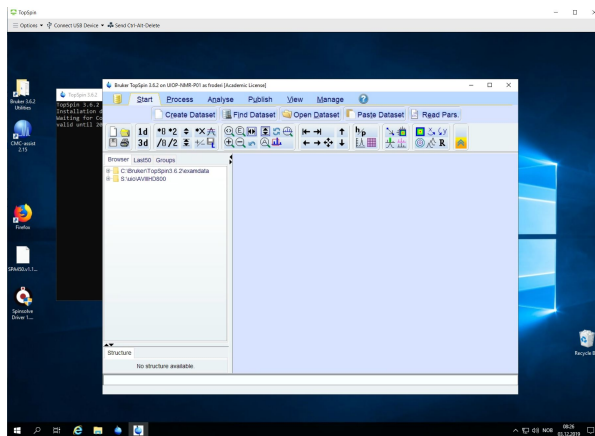
Then you have buttons you might recognize, but still too few of them



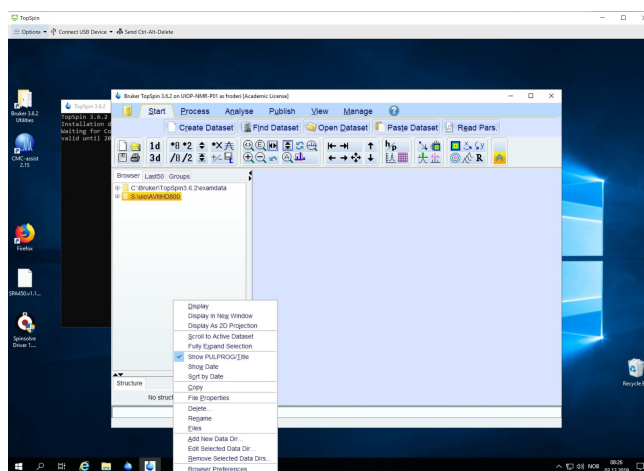
Click on the double arrow.



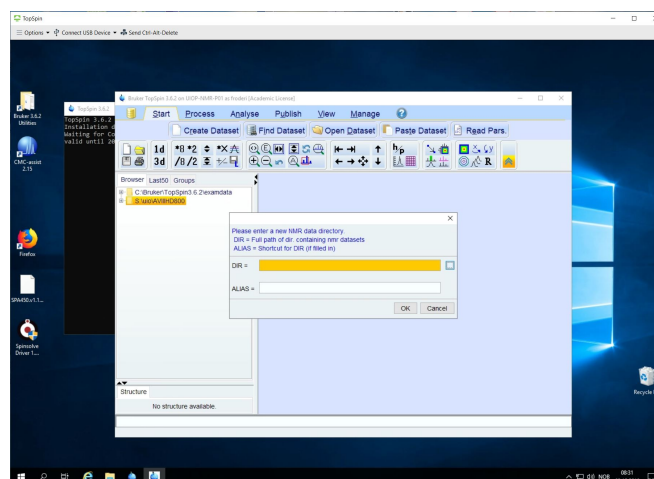
All the familiar buttons do appear.



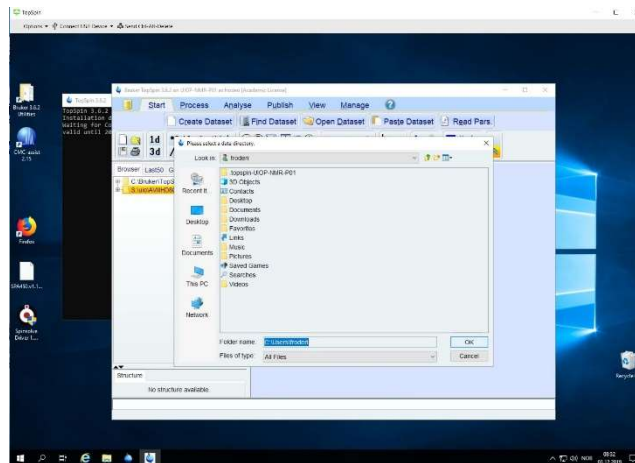
You are now recognizing that your data is missing in the left hand side of TopSpin. Right click in the left part and observe a pop up window. Look for Add New Data Dir.. and left click on it.



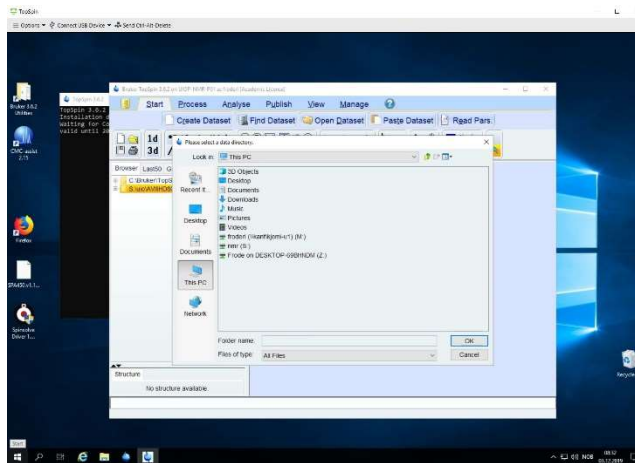
Locate a small blue square to the right of the yellow DIR= line. Click on it.



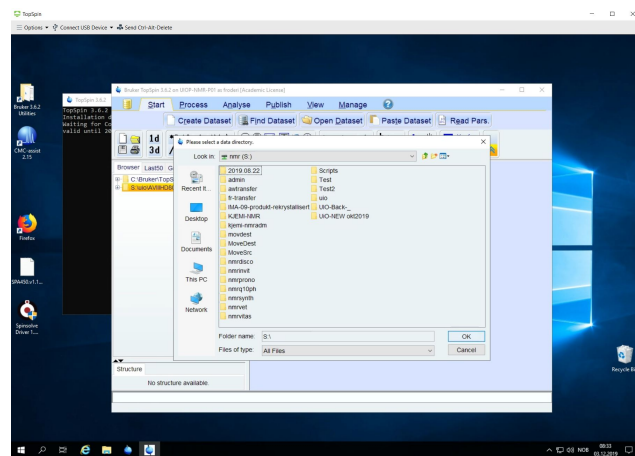
A new window pops up. Locate This PC and click on it.



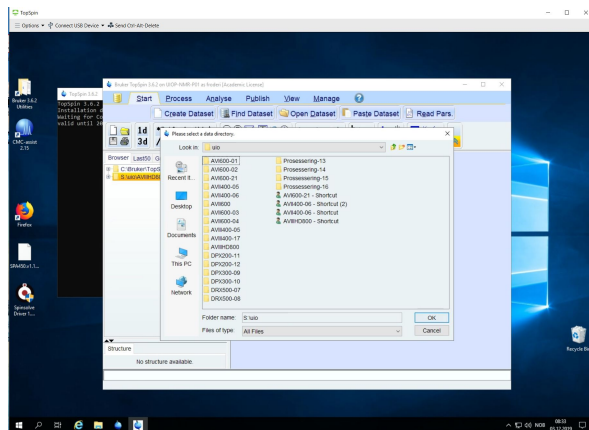
Then nmr(S) appear among many other locations. Click on S



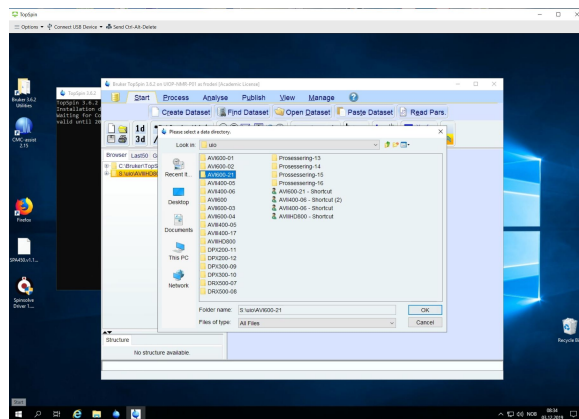
Click on uio



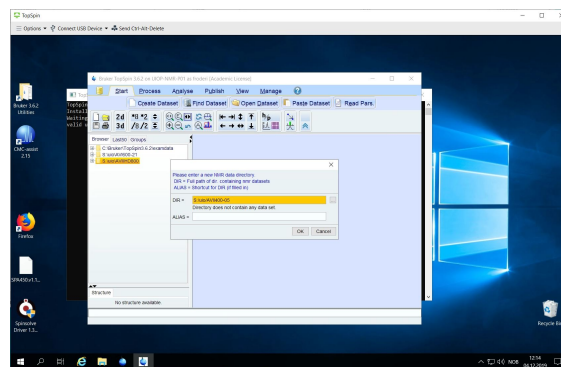
Now familiar data locations do appear



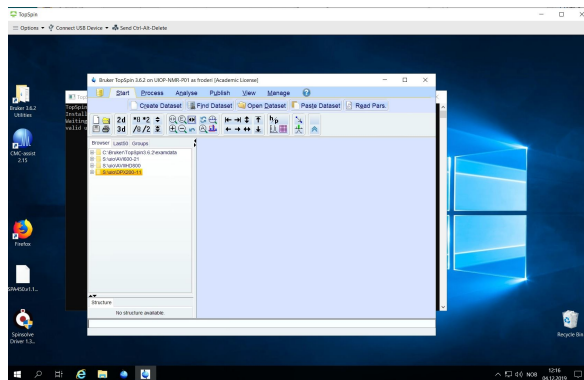
Click on the one you want to add to the left pan in TopSpin



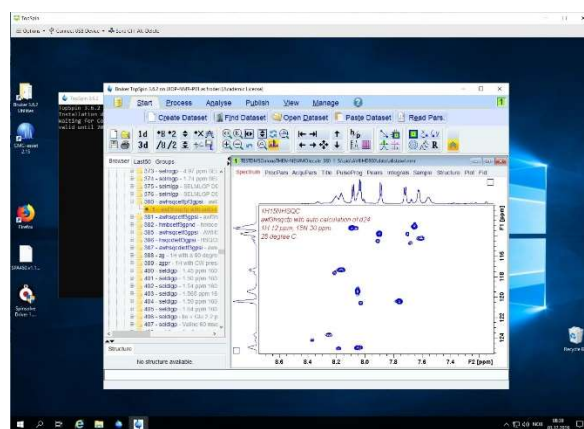
It appears in the yellow line. Click on OK.



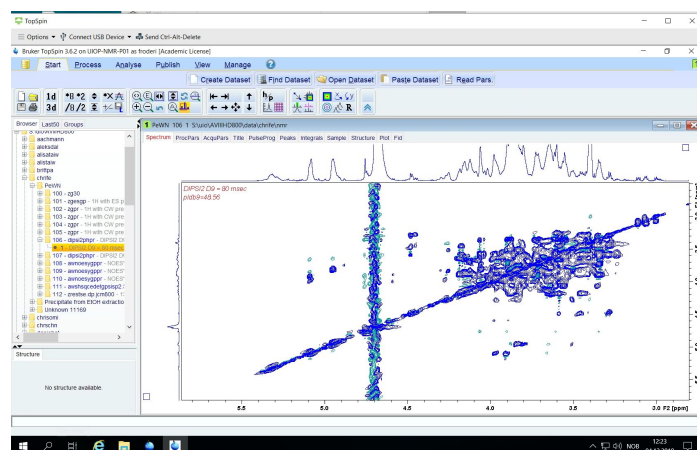
The new directory appears in TopSpin.



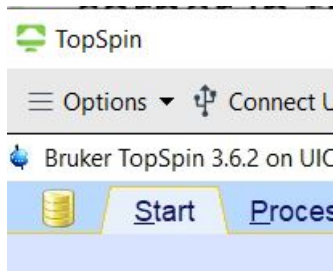
Open your data as you have learned elsewhere. Have fun.



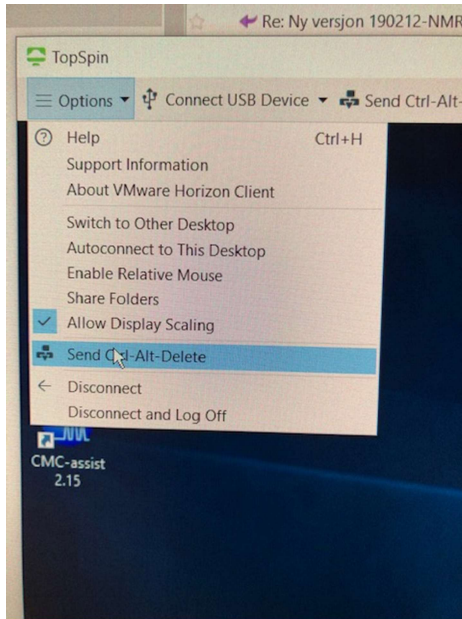
Then you have to get out of TopSpin the correct way and also out of VMWare the correct way. Exiting wrongly will create chaos and sluggish VMware. Locate the two X-es in the upper right corner in the window below? You SHALL NOT use the upper X. The TopSpin X can be used to close TopSpin. The X belonging to VMware SHALL NOT be used.



Locate instead the three lines in upper left corner.



Click there. By doing this a pull down menu appears – in the menu Send Ctrl-Alt-Delete is an option. Use it.



Select Sign Out and you come back to your own desktop.

